



# T2R16 Polyclonal Antibody

<b>Catalog No</b>	YP-Ab-13681
<b>Isotype</b>	IgG
<b>Reactivity</b>	Human;Rat;Mouse;
<b>Applications</b>	WB;IF;ELISA
<b>Gene Name</b>	TAS2R16
<b>Protein Name</b>	Taste receptor type 2 member 16
<b>Immunogen</b>	The antiserum was produced against synthesized peptide derived from human TAS2R16. AA range:136-185
<b>Specificity</b>	T2R16 Polyclonal Antibody detects endogenous levels of T2R16 protein.
<b>Formulation</b>	Liquid in PBS containing 50% glycerol, 0.5% BSA and 0.02% sodium azide.
<b>Source</b>	Polyclonal, Rabbit,IgG
<b>Purification</b>	The antibody was affinity-purified from rabbit antiserum by affinity-chromatography using epitope-specific immunogen.
<b>Dilution</b>	Western Blot: 1/500 - 1/2000. Immunofluorescence: 1/200 - 1/1000. ELISA: 1/20000. Not yet tested in other applications.
<b>Concentration</b>	1 mg/ml
<b>Purity</b>	≥90%
<b>Storage Stability</b>	-20°C/1 year
<b>Synonyms</b>	TAS2R16; Taste receptor type 2 member 16; T2R16
<b>Observed Band</b>	34kD
<b>Cell Pathway</b>	Cell membrane ; Multi-pass membrane protein .
<b>Tissue Specificity</b>	Expressed in a subset of gustducin-positive taste receptor cells of the tongue. Expressed in circumvallate papillae and testis (PubMed:16720576).
<b>Function</b>	function:Gustducin-coupled receptor implicated in the perception of bitter compounds in the oral cavity and the gastrointestinal tract. Signals through PLCB2 and the calcium-regulated cation channel TRPM5.,miscellaneous:Confers bitter perception of salicin to non-taster mice.,miscellaneous:Several bitter taste receptors are expressed in a single taste receptor cell.,polymorphism:The Lys-172 polymorphism in TAS2R16 is associated with genetic susceptibility to alcoholism [MIM:103780].,similarity:Belongs to the G-protein coupled receptor T2R family.,tissue specificity:Expressed in a subset of gustducin-positive taste receptor cells of the tongue.,
<b>Background</b>	This gene encodes a member of a family of candidate taste receptors that are members of the G protein-coupled receptor superfamily. These family members are specifically expressed by taste receptor cells of the tongue and palate epithelia. Each of these apparently intronless genes encodes a 7-transmembrane receptor protein, functioning as a bitter taste receptor. This gene is clustered with



another 3 candidate taste receptor genes in chromosome 7 and is genetically linked to loci that influence bitter perception. [provided by RefSeq, Jul 2008],

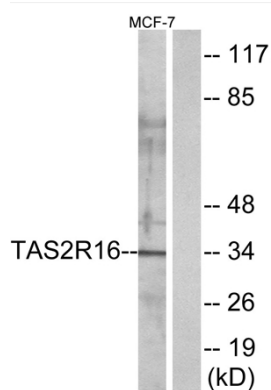
#### matters needing attention

Avoid repeated freezing and thawing!

#### Usage suggestions

This product can be used in immunological reaction related experiments. For more information, please consult technical personnel.

### Products Images



Western blot analysis of lysates from MCF-7 cells, using TAS2R16 Antibody. The lane on the right is blocked with the synthesized peptide.